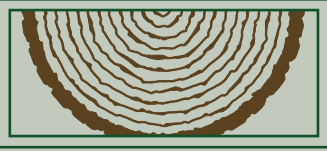


SIEWERS



LUMBER & MILLWORK
SINCE 1884

*Preserving the
past while building
the future*

November 2023 Q4

1901 Ellen Road
Richmond, VA 23230
Phone: (804) 358-2103
Fax: (804) 359-6986
www.siewers.com
Monday-Friday
7:30 am-4:30 pm



Richmond Times-Dispatch

Siewers Lumber & Millwork is
a 2023 Top Workplace!



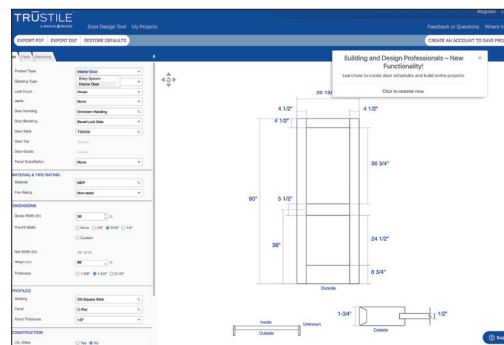
A note from the Siewers Family...

We hope that you and your family have a joyous and peace-filled Holiday Season. Please take this time to catch up with friends and loved ones and cherish all the special moments the season has to offer.

We are looking forward to 2024 and will be having our Architectural Products Show on October 10th, 2024. Mark your calendars and join us.

- The Siewers Family

CONTRACTOR NOTES



TruStile Door Design Tool

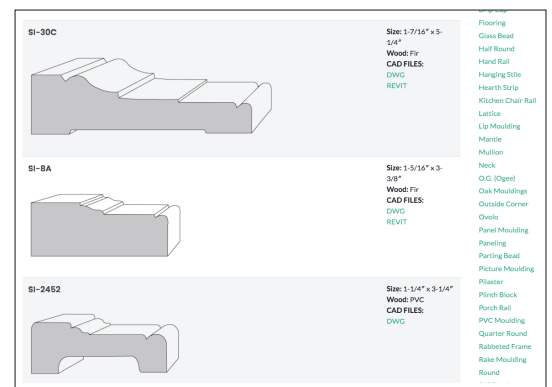
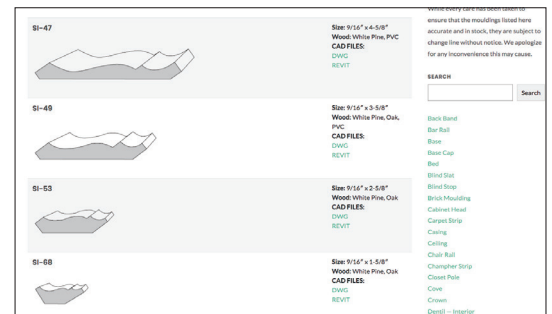
Architects, Designers and Builders can configure multiple doors and save them to a project. TruStile's exclusive web-based software allows you to design your own custom doors. Specify the height, width and location of all the stiles, rails and mullions within a door. Print your drawings or export them in DXF format to use in a wide variety of CAD programs.

<https://www.trustile.com/designtool>

Siewers Moulding Catalog Updates

Our moulding profiles now have an extruded view giving them a 3D appearance. Take a look.

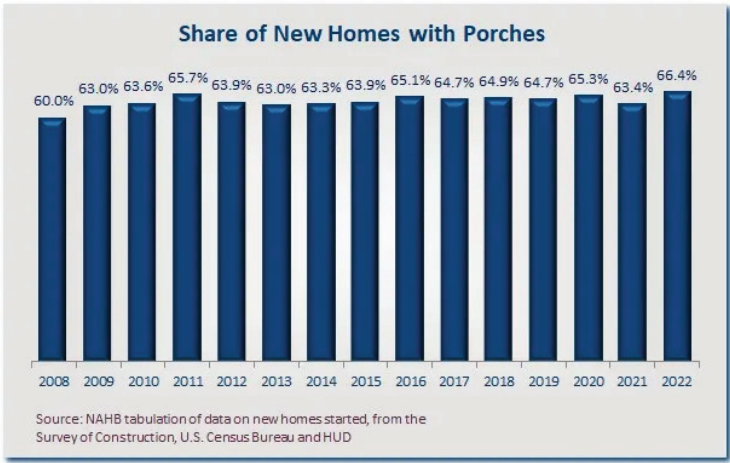
<http://www.siewers.com/moulding-catalog>



Porches on New Homes as Popular as Ever

BY PAUL EMRATH on NOVEMBER 7, 2023 - National Association of Home Builders

Porches have been a popular home feature, consistently ranking in the top 10 in the NAHB surveys of recent and prospective home buyers published in What Home Buyers Really Want. And porches remain as popular as ever specifically on new homes, according to NAHB tabulation of the latest Survey of Construction (SOC, conducted by the U.S. Census Bureau with partial funding from HUD) data. Of the roughly one million single-family homes started in 2022, the SOC data show that 66.4% came with porches. This is the highest the share has been since the re-design of the SOC in 2005.



Recent year-to-year fluctuations in the share of new homes with porches have not been very large, however. Since climbing to 63% for the first time in the 2009 trough of the Great Recession, the share hovered in a relatively narrow band between 63% and 66% before finally breaking above 66% for the first time in 2022.

Traditionally, porches on new homes have been most common in the four states that make up the East South Central Census division. That was true again in 2022, although the gap has narrowed. In 2022, 80% of new homes in the East South Central had porches, but the share was over 70% in four of the other eight divisions: the Pacific (78%), New England (73%), Mountain (72%), and South Atlantic (71%) divisions. Compared to the previous year's results, the share of new homes with porches jumped upward by 7 to 10 percentage points in the Pacific, New England, and South Atlantic Divisions, but actually declined by 7 points in the East South Central.

The SOC provides information about the number of new single-family homes with porches, but not many details beyond that. Additional information, however, is available from the Builder Practices Survey (BPS), conducted annually by Home Innovation Research Labs. Among other things, the 2023 BPS report (based on homes built in 2022) shows that porches continue to be most common on the front of new single-family homes, rather than on the side or rear. Whether front, side or rear, the size of the porches tends to average a little over 100 square feet—unless it is a screened-in porch, in which case the average is well over 200 square feet.

To build their new home porches, builders continue to use concrete more than any other material on a square-foot basis—except in New England, where treated wood, composite, natural stone, and PVC or other plastics are each used more than concrete.



*Holiday gift ideas;
storm doors to
stocking stuffers.*

SIEWERS

LUMBER & MILLWORK
SINCE 1884

804-358-2103 www.siewers.com

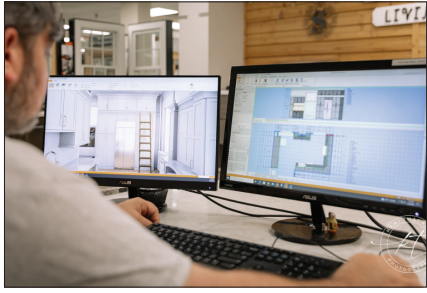
SIEWERS

LUMBER & MILLWORK
SINCE 1884

1901 Ellen Rd, Richmond, VA Gift Card

SIEWERS CABINET DEPT

Stop by our cabinet showroom



We utilize state-of-the-art design software to provide you with a visual 3D rendering of your project space.



Custom colors offered by our Siewers Cabinetry Line with a nostalgic Richmond feel.



Our unparalleled selection of finishes offers affordable luxury, making each cabinet a distinctive statement piece for your home. Choose from a variety of finishes and styles to reflect your vibrant and sophisticated personality, distinguishing our cabinets as truly exceptional.



UPCOMING EVENTS

Architectural Products Show will be on October 10th, 2024. Come and check out the many manufacturers, grab some food and enter to win door prizes.

Architectural Products Show 2021



HOLIDAY HOURS

Thanksgiving

We will be closed Thursday, November 23rd and Friday 24th for Thanksgiving. We are very thankful for you and all of your associates who continue to make Siewers Lumber successful. Siewers reopens at 7:30am Monday, November 27th.

Christmas

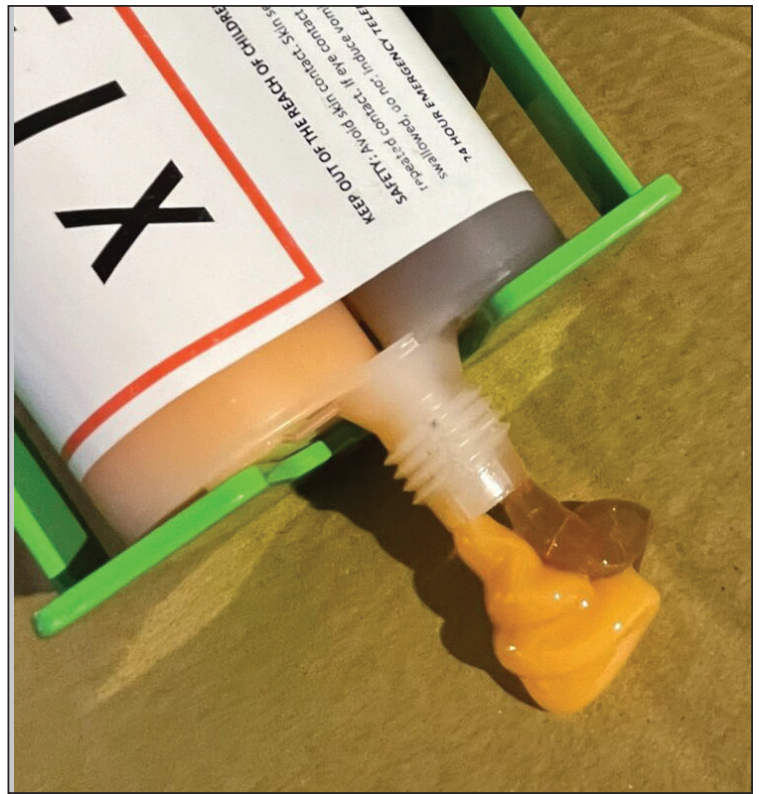
We will be closing at 3pm on Friday December 22nd for our Christmas Party and closed Monday, December 25th, and Tuesday December 26th, 2023 for Christmas. From all your friends at Siewers Lumber, please have a Merry Christmas and Happy New Year! We will reopen at 7:30am Wednesday, December 27th.

PRODUCT SHOWCASE

Flexible Epoxies for Wood Rot Repair: Mitigating Age Hardening with Cross- Linking Inhibitors



One of the challenges associated with flexible epoxies is age hardening. Age hardening refers to the gradual loss of flexibility and the development of a more rigid and brittle character over time. This process is accelerated by exposure to environmental factors, such as UV radiation and moisture. As wood elements such as exterior trim, doors, windows, and fascia boards are often exposed to outdoor conditions, this phenomenon can pose a significant problem. To combat age hardening in flexible epoxies for wood repair, cross-linking inhibitors are introduced into the formulation during the manufacturing process.



Dura-Fix Warm and Cold Weather Formulas have been engineered to take advantage of the benefits of cross-linking inhibitors and are built into the backbone of the resin technology. The dual cartridge dispensing system assures the correct ratio of resin to hardener, eliminating guess work and minimizes product waste.

HERE AT SIEWERS

