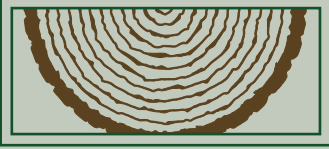




SIEWERS



LUMBER & MILLWORK
SINCE 1884

*Preserving the
past while building
the future*

December 2025 Q4

1901 Ellen Road
Richmond, VA 23230
Phone: (804) 358-2103
Fax: (804) 359-6986
www.siewers.com
Monday–Friday
7:30 am–4:30 pm

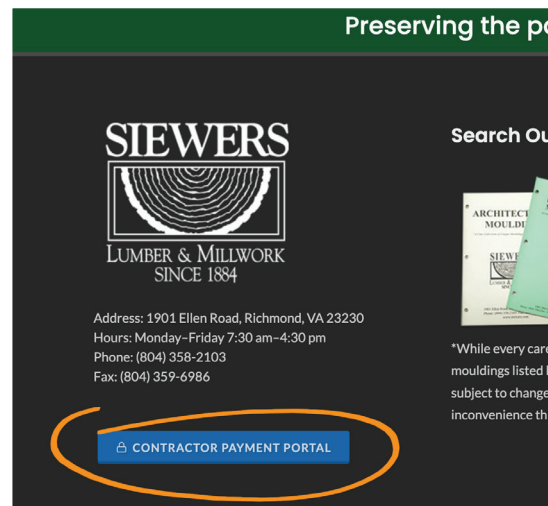
A note from the Siewers Family...

We hope that you and your family have a joyous and peace-filled Holiday Season. Please take this time to catch up with friends and loved ones and cherish all the special moments the season has to offer.

We are looking forward to 2026 and hope that you will join us for our Architectural Show in the fall.

CONTRACTOR NOTES

Contractor Payment Portal



Make a payment online through our new Contractor Payment Portal. User-friendly interface improves payment turnaround times and reduces delays caused by cumbersome payment processes.

The My Account Dashboard gives you 24/7 access to both your latest and historical account information. Depending on your account access settings, you can view important information such as your billing details, jobs, orders, quotes, invoices, payments, and statements. The data found in your account is automatically updated at the end of the day ensuring that the information stays up-to-date at all times.



BUILDERWIRE Thank Constructive

Departments Product Collections About BuilderWire Our Customers

Dashboard [Switch Accounts](#)

Dashboard

Account Settings
Invoices
Orders
Quotes
Payments
Statements

Account Details

Username	Admin
Name	Admin
Email	Admin@builderwire.com
Account Number	BW00000
Account Name	Tom Jones

[Make Payment](#)

Account Summary

Last Statement Summary	Friday, December 31, 2021	Current Summary	Tuesday, February 22, 2022
Last Statement Balance	\$0.00	Outstanding Balance	\$0.00
- Statement Credit Balance	\$0.00	+ Finance Charges	\$0.00
- Statement Discount	\$0.00	- Credit Balance	\$0.00
Discount Date		Total Outstanding Due	\$0.00
Net Statement Due	\$0.00		
View Statements		Discount Current	\$0.00
		Payment This Month (ERP Posted)	\$0.00
		Last Payment Date (ERP Posted)	

* Last Statement Summary reflects the last statement balance only and will not reflect any recent payments. Please see the Current Account Summary for the current balance and recent payment activity.

HOLIDAY HOURS

Christmas

Closing at 3:00 PM Tuesday, 12/23
Closed Wednesday, 12/24
Closed Thursday 12/25
Closed Friday 12/26.

New Years

Closing at 3:00 PM Wednesday 12/31
Closed Thursday, 1/1.

*Siewers Lumber & Millwork
remains thankful for your
business and wish you and your
family a wonderful happy holidays, a
joyous Christmas and a healthy and
prosperous New Year in 2026.*



SIEWERS CABINET DEPT

A well designed kitchen

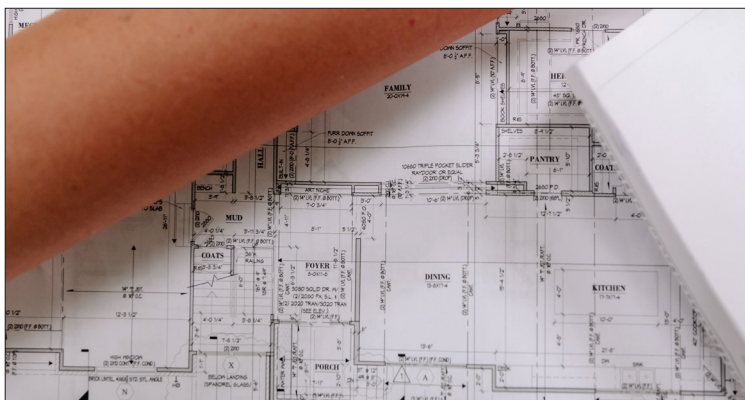
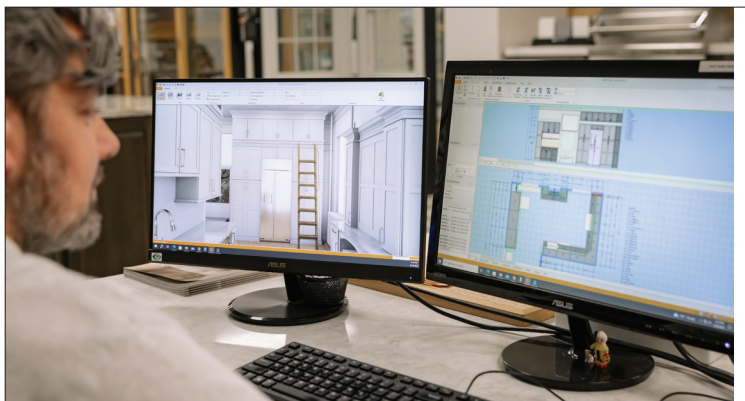
You spend a lot of time in your kitchen. We've spent a lot of time designing them. And not just kitchens – baths, laundry and mud rooms, home offices and outdoor spaces. We know the ins and outs of what it takes to make your space work for you.

The design process can help define your goals and needs for functionality and storage needs. Cabinet layout and configuration is crucial for functionality and flow in the kitchen. Some options for layout include a U-Shape which offers plenty of counter and storage space, ideal for larger kitchens. With cabinets on three sides, it allows for an efficient workflow. L-Shaped layouts use two adjacent walls for cabinets, creating an open space in the middle and is ideal for smaller kitchens or open-concept designs. Two parallel walls in a galley style are best for narrow or small kitchens with cabinets on either side. Island or Peninsulas add central storage and counter space, often with seating or extra prep areas while peninsulas are great for smaller spaces where an island might not fit.

Maximizing storage and making sure everything has a place can make your kitchen more functional. Pull-out shelves and drawers offer easy access to deep cabinets. Ideal for pots, pans, or pantry items. A lazy susan is perfect for corner cabinets, making it easy to access hard-to-reach items. Slim vertical storage of a Pull-out Pantry can fit into narrow spaces, offering easy access to canned goods, spices, and dry food. Deep drawers make it easier to access heavy pots, pans, and dishes. Conceal waste bins within cabinetry to keep the kitchen tidy with Pull-out Trash & Recycling Bins. Baking sheets, cutting boards, or trays can be stored using vertical dividers.

Once you've selected your cabinet layout, choosing cabinet style and color, accessories, and hardware will finish out your space. During this phase also consider lighting integration which can play a huge role in cabinet design, especially with under-cabinet and inside-cabinet lighting.

Siewers designers are happy to work directly with you, with your builder/remodeler, or with your interior designer on your project. We will provide you with 3D renderings that include all your design selections to help you visualize your space.



PRODUCT SHOWCASE

Jamsill Guard®

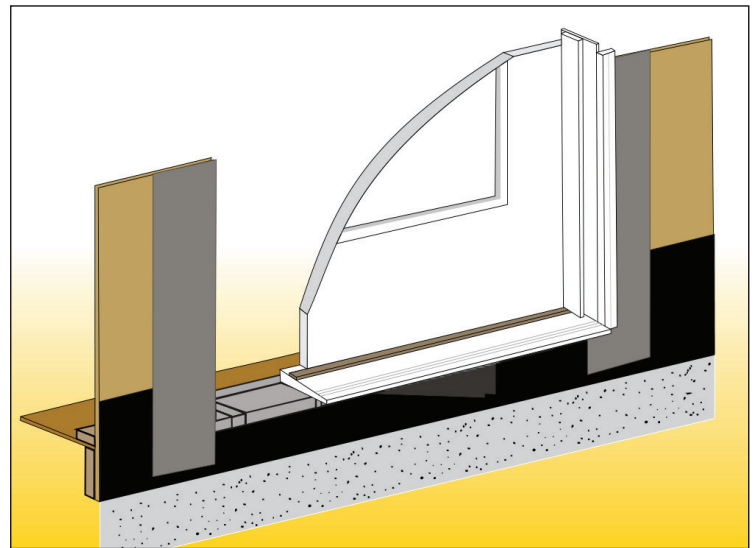
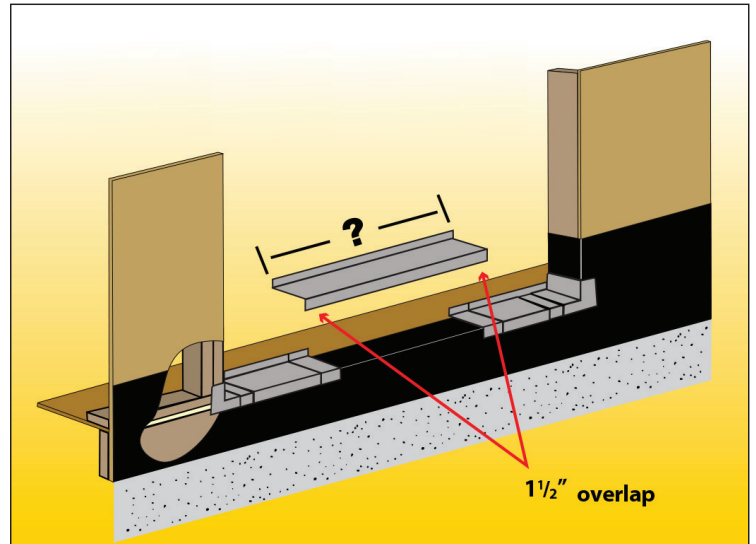
When Doors and windows start to leak at the lower corners where the jamb and threshold meet, the Jamsill Guard® unique one piece injection molded corners completely wrap the sub-floor and framing protecting your carpets, hardwood and rough framing from any potential damage. The Center section is joined to the ends with PVC cement to create a one piece sill pan that is an impenetrable barrier against leaks.

Jamsill Guard® sill pan flashing is designed to prevent water damage from window and door leaks. Manufactured from high impact ABS plastics, Jamsill Guard® will not corrode or deteriorate over time. Our products have been time tested for over 28 years with over 2 million sold and not one reported leak.

Jamsill Guard's three-piece design allows the installer on-site adjustability to fit all rough openings and is bonded together in the field with PVC cement. Jamsill Guard® sill pan flashing products are available in 8 different depths and will accommodate most door and window applications in either 2x4 or 2x6 construction.

Jamsill Guard® Features include:

- Sloped weep areas direct moisture toward the exterior of the structure.
- 3-piece design allows for on-site adjustability.
- Inexpensive and easy to install.
- Bonds together with PVC cement.
- Durable impact resistant ABS plastics: Impervious to rust, corrosion and electrolysis.



HERE AT SIEWERS

